

IPCC Climate fact sheets for the sectors - Introduction

Purpose

- The IPCC Sixth Assessment Report (AR6) Working Group I (WGI) Report **assessed current and future regional changes to 33 climatic impact-drivers CIDs** (for example, mean temperature and extreme heat, floods, droughts, sea level rise) that are connected to impact sectors.
- In each fact sheet, we provide the key messages about climatic variables that are relevant for the following sectors: **Cities, Buildings, and Transport; Energy; Health; Tourism; Agricultural and Pasture Systems; Marine Ecosystems and Fisheries; Forestry; Terrestrial Ecosystems; Water Resources Management; and Disaster Management and Insurance.**
- The fact sheets constitute an entry point for information in the Chapters, the Technical Summary and the Interactive Atlas. The content is not exhaustive but represents most of the high-level key messages assessed in the WGI Report that are relevant for the sectors.
- This set of climate fact sheets for sectors is an outreach product that is **fully traceable** to the IPCC Working Group I Sixth Assessment Report.
- These fact sheets focus on information regarding physical climate changes, **with assessment of sectoral impact, vulnerability and adaptation provided by the IPCC Working Group II, and assessment of mitigation provided by Working Group III.**

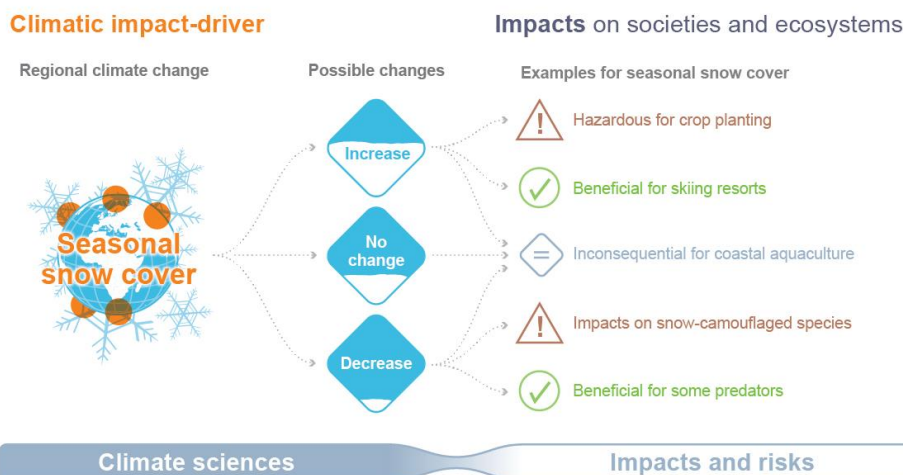
Definitions from the IPCC WGI Glossary

- **Meteorological drought:** A period with an abnormal precipitation deficit.
- **Agricultural and ecological drought:** Depending on the affected biome: a period with abnormal soil moisture deficit, which results from combined shortage of precipitation and excess evapotranspiration, and during the growing season impinges on crop production or ecosystem function in general.
- **Fire weather:** Weather conditions conducive to triggering and sustaining wildfires, usually based on a set of indicators and combinations of indicators including temperature, soil moisture, humidity, and wind. Fire weather does not include the presence or absence of fuel load.

[Link to the Glossary](#)

FAQ 12.1: What is a climatic impact-driver (CID)?

A **climatic impact-driver (CID)** is a climate condition that directly affects elements of society or ecosystems. Climatic impact-drivers and their changes can lead to **positive, negative, or inconsequential** outcomes (or a mixture).



Climatic impact-drivers (CIDs): Climatic impact-drivers are physical climate system conditions (e.g., means, events, extremes) that affect an element of society or ecosystems. Depending on system tolerance, CIDs and their changes can be detrimental, beneficial, neutral or a mixture of each across interacting system elements and regions. See also Risk, Hazard and Impacts (Glossary).

