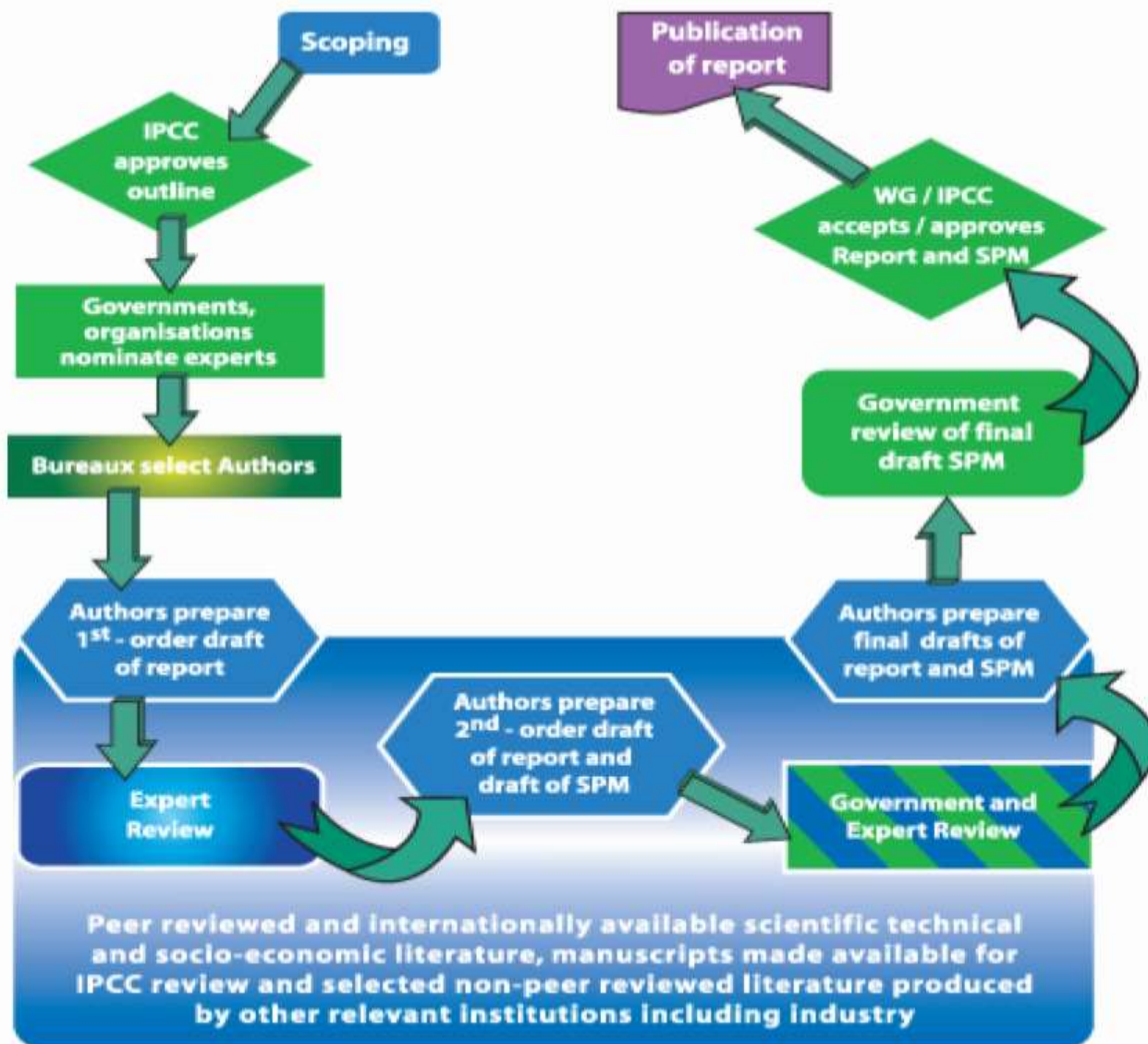


# Objectives and Vision

IPCC special report on the impact of global warming of 1.5 °C above pre-industrial levels and greenhouse gas emission pathways

Thelma Krug  
Chair of the Scientific Steering Committee

WMO, Geneva, Switzerland, 15-18 August 2016



# Objective

- To scope and structure the *Special Report on the impacts of global warming of 1.5 °C above pre-industrial levels and related global greenhouse gas emission pathways, in the context of strengthening the global response to the threat of climate change, sustainable development and efforts to eradicate poverty*, to be submitted for approval to the IPCC Panel at its 44<sup>th</sup> session in Bangkok, Thailand, from 17 to 20 October 2016.

# *Expected Outcomes*

- Chapter titles and brief outline of the chapter contents (bullet points)
- Title of the report

# *Needed Focus*

- Differential implications of the 1.5°C global warming relative to the 2°C
- Consider the other reports that will be prepared by the IPCC in the course of the assessment cycle (AR6)
  - Avoid overlap

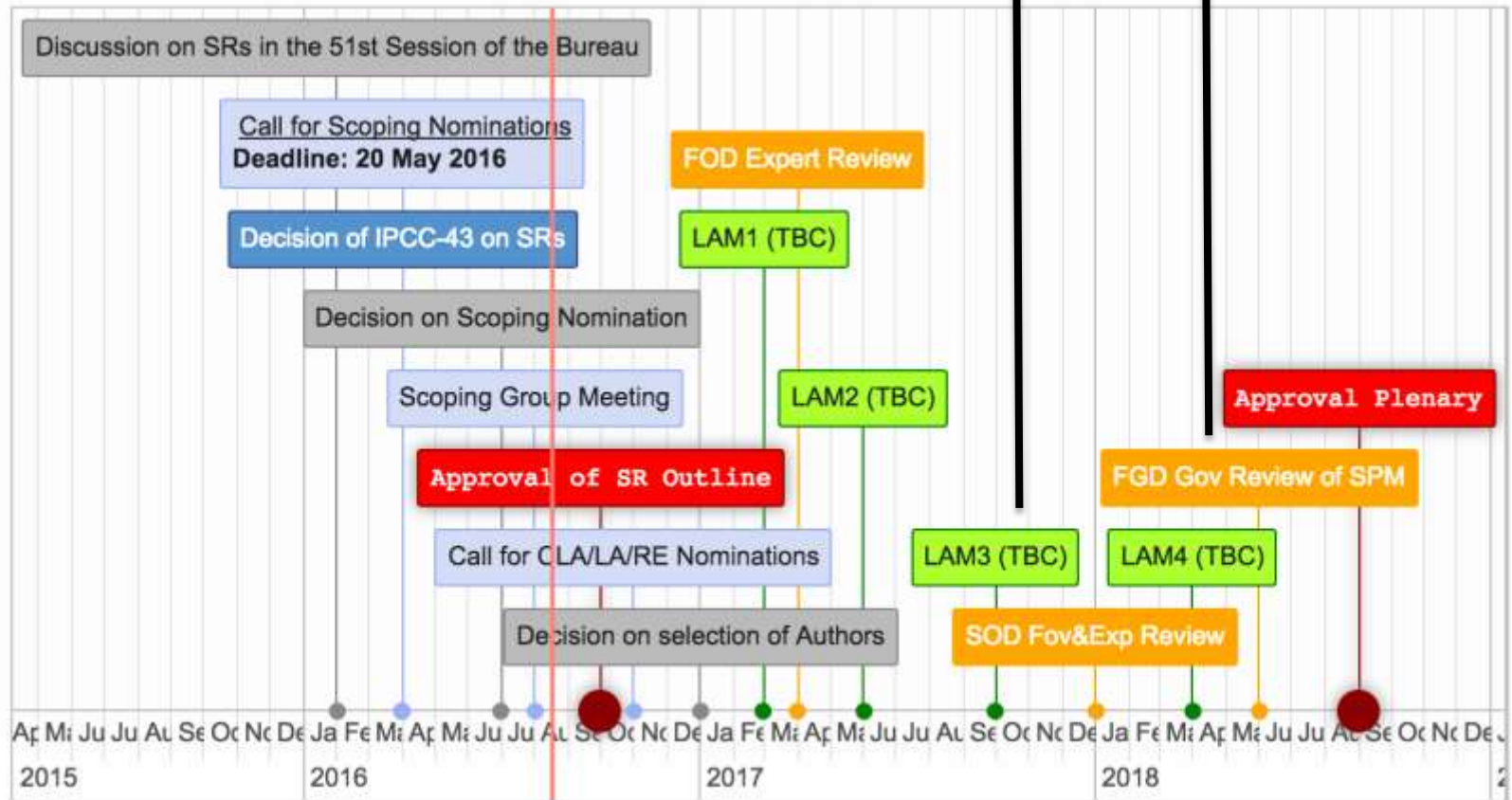
# *Motivation and Background*

- Uniqueness of this report to the IPCC
  - Particular importance for policy decisions
    - Facilitative dialogue in 2018
- Interest in strengthening the global response to CC and accelerating change
- Concerted level of multidisciplinary dialogue and interdisciplinary integration
  - Greater role of social sciences (e.g., societal transformation)
- Build from the AR5 report that addressed global emission pathways likely to limit warming to below 2 °C and concentrate on the new scientific knowledge to limit the temperature increase to 1.5 °C

# Special Report timeline and publication cut-off dates

**Oct 2017: Submission**

**April 2018: Acceptance**



# THIS AFTERNOON: A First Take on Scoping the 1.5°C Report

## Track 1: Global greenhouse gas **emission pathways and impacts** of global warming of 1.5°C above pre-industrial levels

- *Changes in the Earth system and response to perturbations of the Earth's energy balance*
- *Impacts on ecosystems and human systems: attributing risks, avoided risks*
- *Mitigation pathways*

## Track 2: Global warming of 1.5°C above pre-industrial levels in the context of **strengthening the global response** to the threat of climate change

- *Adaptation and mitigation options (in the context of pathways)*
- *Socio-technical transitions associated with the integration of adaptation and mitigation*

## Track 3: Global warming of 1.5°C above pre-industrial levels in the **context of sustainable development**, and efforts to eradicate poverty

- *Adaptation and mitigation in relation to sustainable development, poverty eradication and food security*
- *Integrative framework for implementation pathways*



# THANK YOU FOR YOUR ATTENTION!

## For more information:

Website: <http://ipcc.ch/>

IPCC Secretariat: [ipcc-sec@wmo.int](mailto:ipcc-sec@wmo.int)

IPCC Press Office: [ipcc-media@wmo.int](mailto:ipcc-media@wmo.int)

## Find us on:



@IPCCNews



@IPCC\_CH



IPCC\_Climate\_Change



<https://www.linkedin.com/company/ipcc>



<http://www.slideshare.net/ipcc-media/presentations>



<https://www.flickr.com/photos/ipccphoto/sets/>



<https://www.youtube.com/c/ipccgeneva>



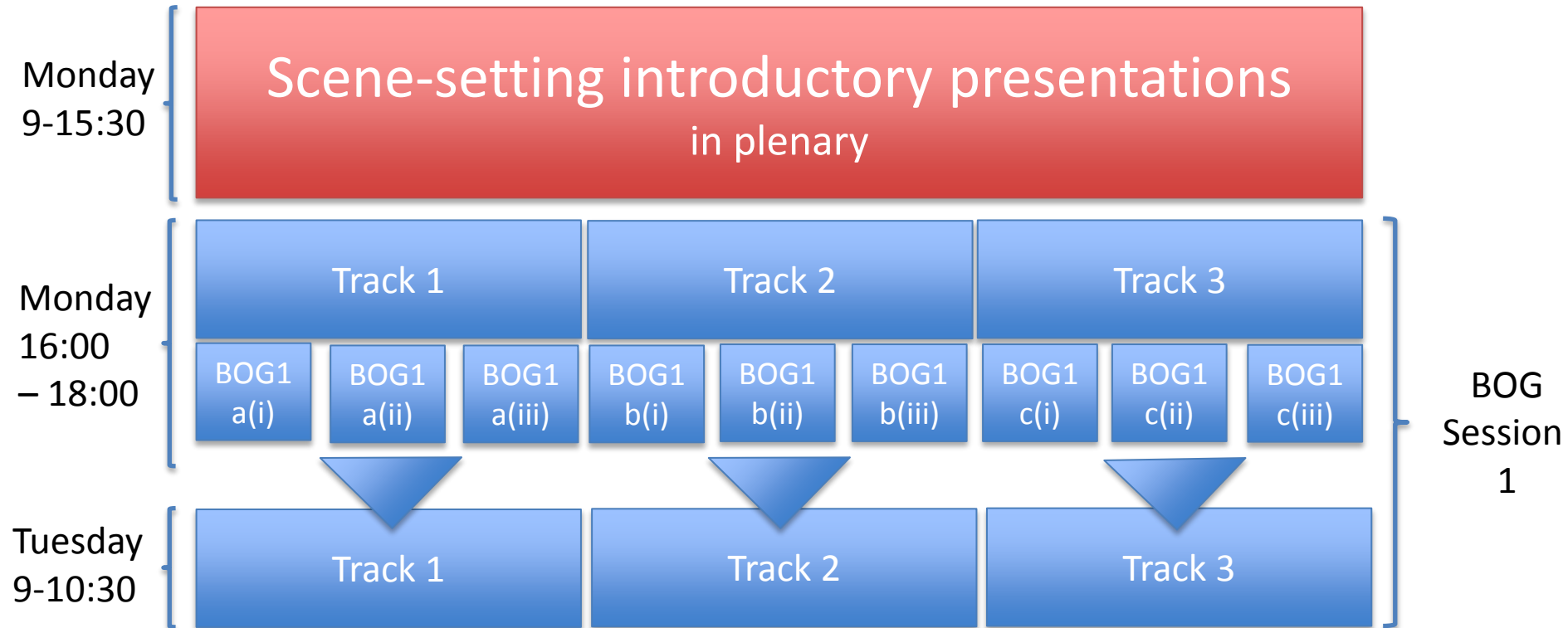
<https://vimeo.com/ipcc>

ipcc

INTERGOVERNMENTAL PANEL ON climate change



# Arc of the Scoping Meeting



Change with a suitable photo

# Scoping Meeting Background Document: IPCC special report on the impact of global warming of 1.5 °C above pre-industrial levels

Thelma Krug  
Chair of the Scientific Steering Committee

WMO, Geneva, Switzerland, 15-18 August 2016

**ipcc**  
INTERGOVERNMENTAL PANEL ON climate change



# *Background Document*

- General document for consideration of the participants
  - Contextualize the invitation for the Special Report (meeting the needs of the UNFCCC and other stakeholders)
  - Frames the societal challenges
  - Sets out a suite of themes and scientific questions
  - Raises some methodological challenges

# *Background Document*

Important to note that:

- Questions posed in the background document are not exhaustive and have been identified by the SSC as potentially relevant to address the concerns of different stakeholders, in particular governments
- SR is not expected to address all the questions associated with the themes
- That may be no relevant literature available
- The themes identified were not thought to be linked to the structure of the SR



# *Background Document*

- Changes in the climate system and response to perturbations of the Earth's energy balance
- **Mitigation pathways**
- Impacts on ecosystems and human systems
- Risks and adaptation
- Mitigation options and their wider impacts
- The interaction of climate risks, adaptation and mitigation
- **Adaptation and mitigation in relation to sustainable development, poverty eradication and food security**
- **Socio-technical transitions**
- **Integrative framework for implementation pathways**