

Pathways for accelerating sectoral transformation, across national and regional contexts and sustainable development needs

Bart van den Hurk
WGII Co-Chair, IPCC AR7

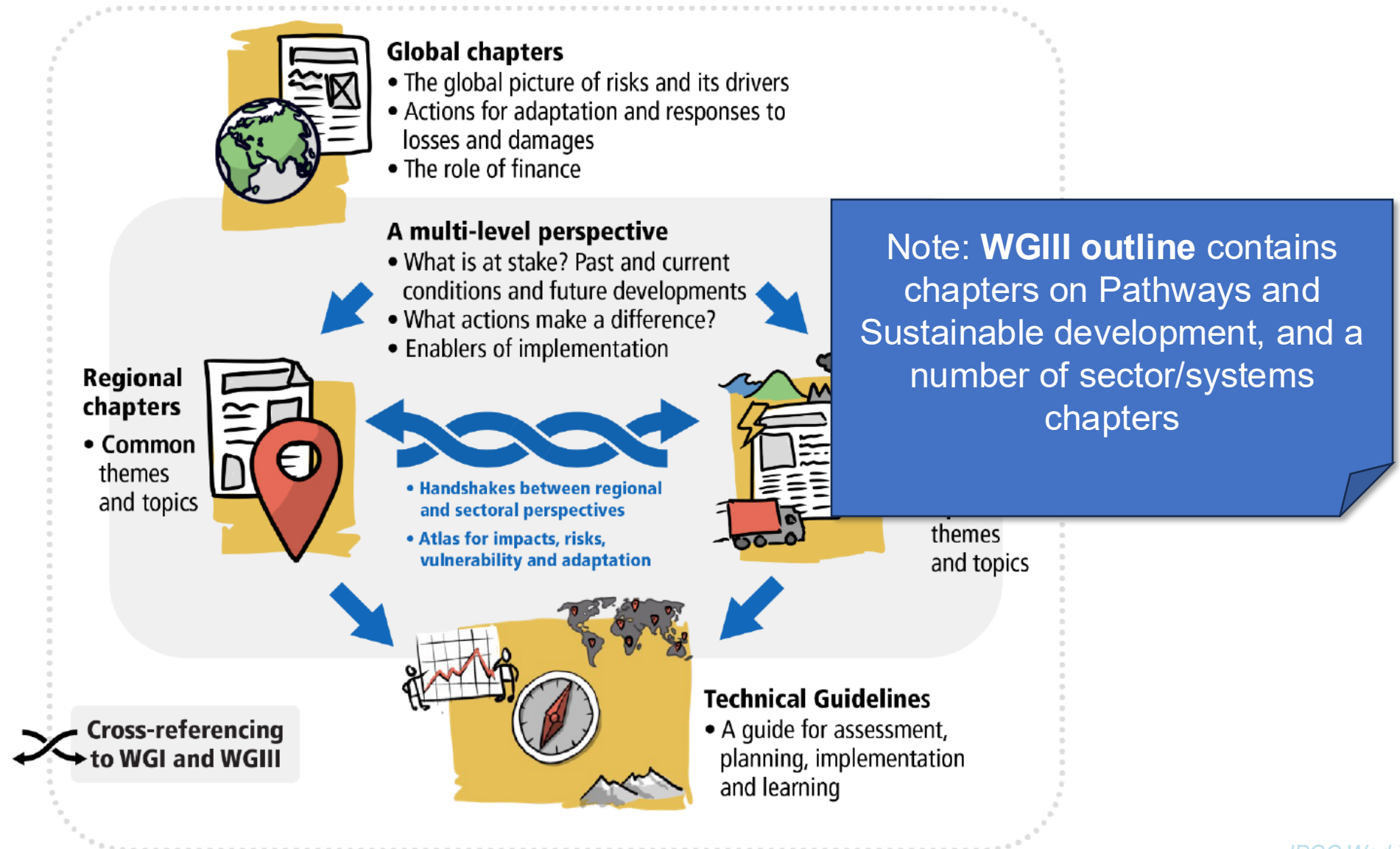


Definition of **Transformation** (AR6 Glossary)

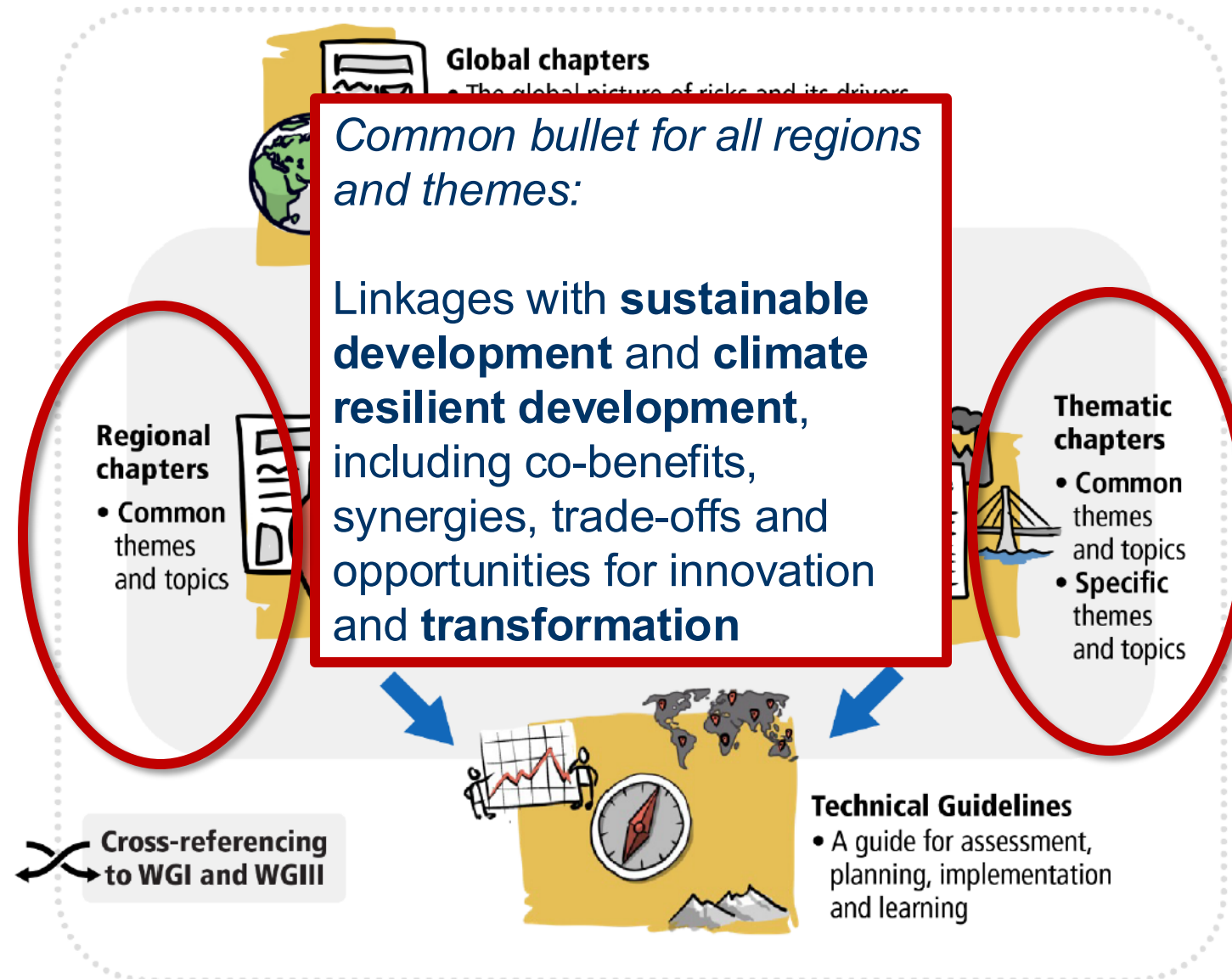
Transformation: A change in the fundamental attributes of natural and human systems. (SYR, WGIII)

Transformative change: A system-wide change that requires more than technological change through consideration of social and economic factors that, with technology, can bring about rapid change at scale. (WGII)

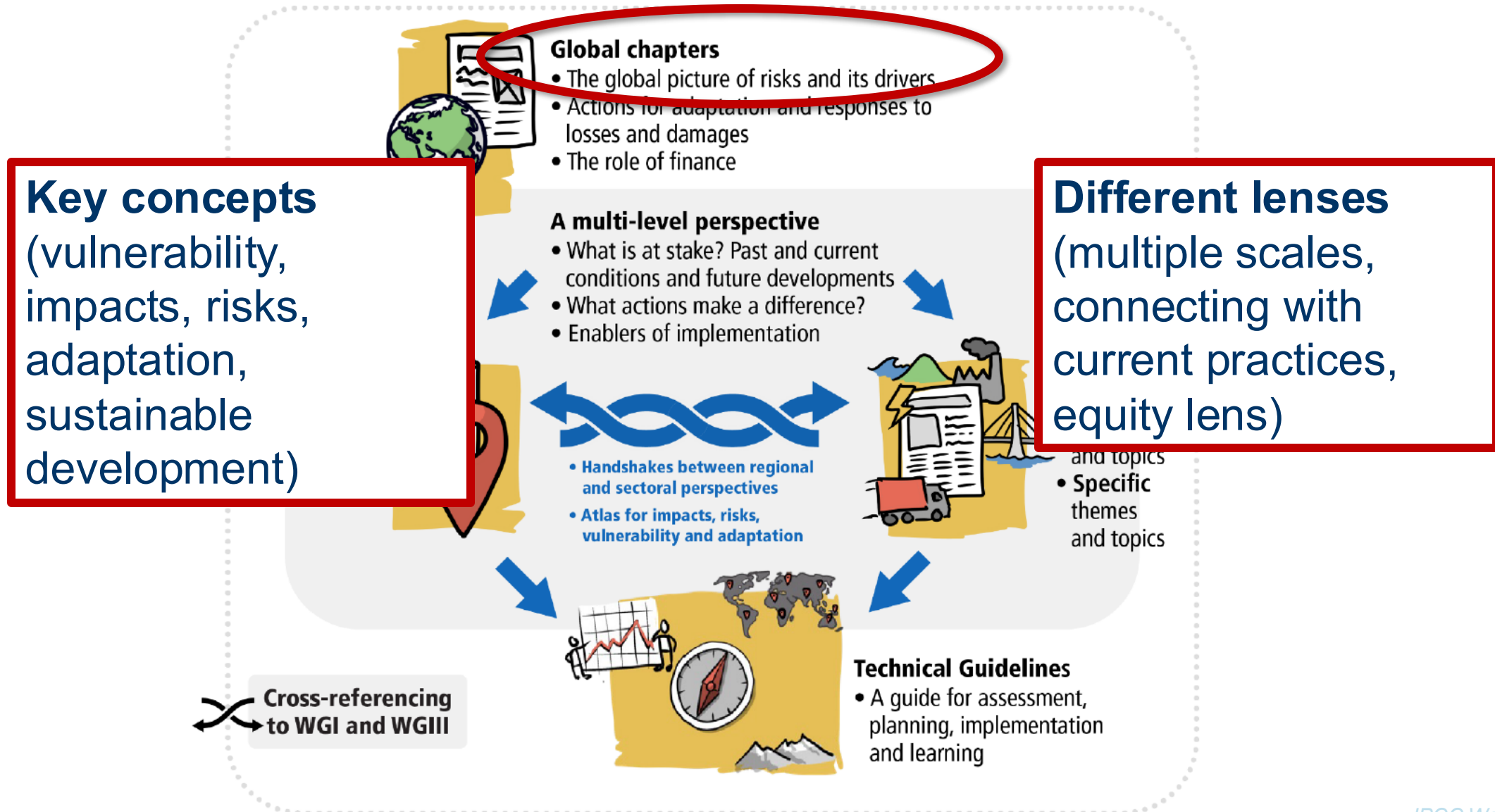
Outline of WG II AR7



Where does transformation appear?



Where may sectoral transformation be assessed?



Where may sectoral transformation be assessed?

Agriculture, food, forestry, fiber and fisheries

Water

Settlements, Infrastructure and Industry systems

Health and well-being

Poverty, livelihoods, mobility and fragility

Ecosystems



Global chapters

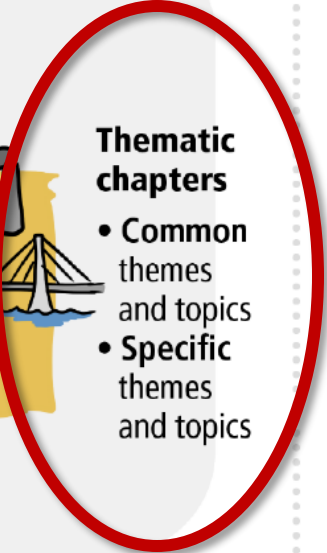
- The global picture of risks and its drivers
- Actions for adaptation and responses to losses and damages
- The role of finance

A multi-level perspective

- What is at stake? Past and current conditions and future developments
- What actions make a difference?
- Enablers of implementation



- Handshakes between regional and sectoral perspectives
- Atlas for impacts, risks, vulnerability and adaptation



Thematic chapters

- Common themes and topics
- Specific themes and topics



Technical Guidelines

- A guide for assessment, planning, implementation and learning

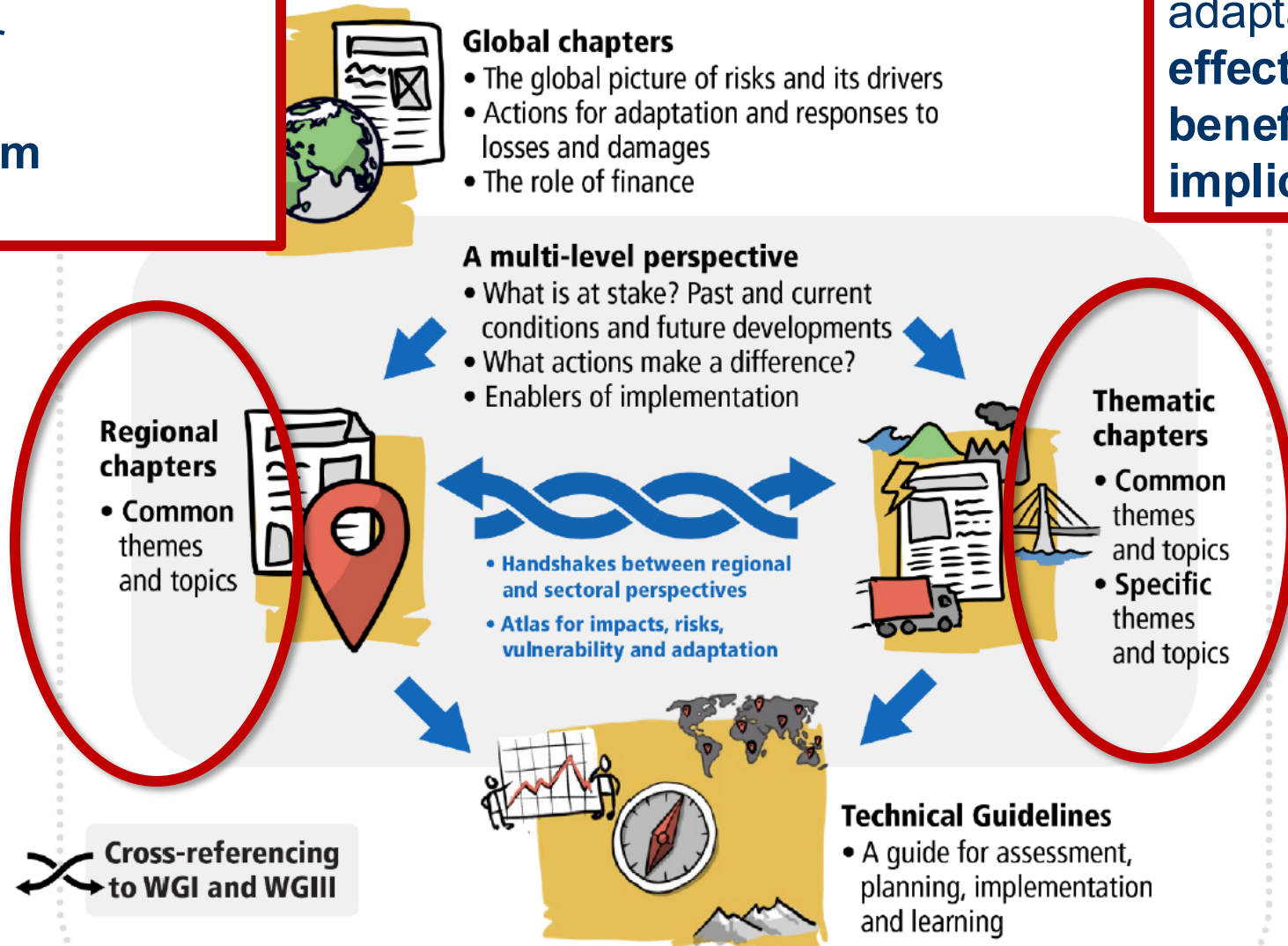
• Common

Cross-referencing

Where may sectoral transformation be assessed?

drivers, enablers and conditions for **accelerated sector/system adaptation**

adaptation feasibility, effectiveness, costs, benefits and equity implications



Where may sectoral transformation be assessed?

Assessment of **existing guidelines** for risk assessment, adaptation planning and MEL from sectors, national and subnational scales

Global chapters

- The global picture of risks and its drivers
- Actions for adaptation and responses to losses and damages
- The role of finance

Practical, stepwise methodology for **embedding sustainable development** within adaptation planning

A multi-level perspective

- What is at stake? Past and current conditions and future developments
- What actions make a difference?
- Enablers of implementation

Regional chapters

- Common themes and topics

Thematic chapters

- Common themes and topics
- Specific themes and topics

Addresses multiple **governance levels** and multiple **sectors**

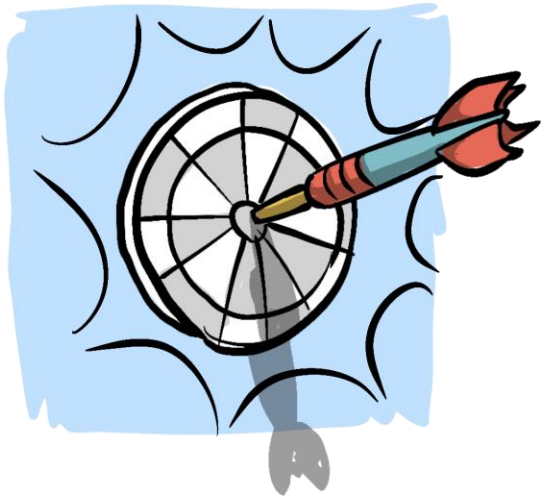
- Handshakes between regional and sectoral perspectives
- Atlas for impacts, risks, vulnerability and adaptation

Technical Guidelines

- A guide for assessment, planning, implementation and learning

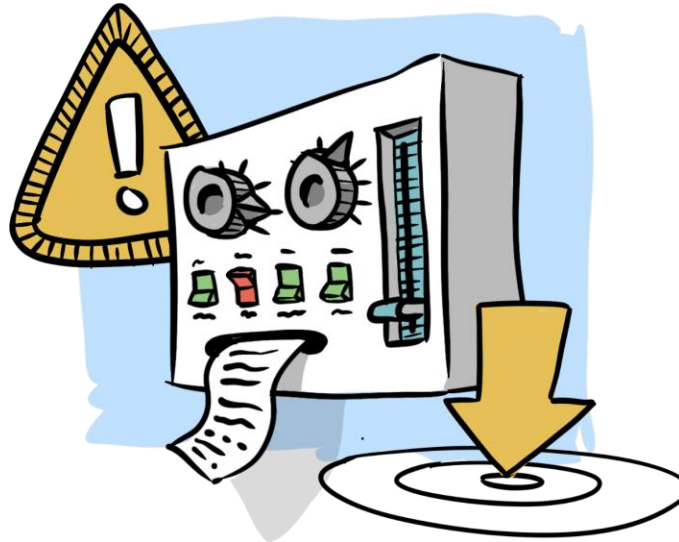
Cross-referencing to WGI and WGIII

Expected contribution to the theme



Action-oriented

Transformative change and sustainable development require translation to real-world practices and decisions



Integration

Synergies and trade-offs across adaptation/mitigation, across sectors, across time



Inclusivity

Multiple stakeholder audiences, an equity lens, and inclusive approaches in our processes